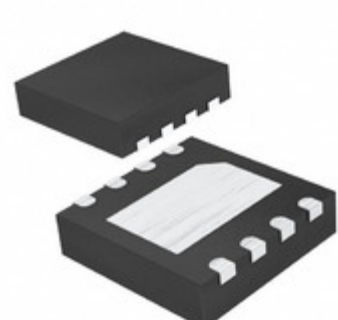


MAX4731ETA+



Images are for reference only.
See Product Specifications for product details.
Buy MAX4731ETA+ with confidence from Component-World.HK, 1 Year Warranty



Part Number: [MAX4731ETA+](#)
Manufacturer: [Maxim Integrated](#)
Description: IC SWITCH DUAL SPST 8TDFN
Data sheet: [Part Numbering System](#)
[MAX31-33](#)

RoHS Status: Lead free / RoHS Compliant
Ship From: Hong Kong
Shipment Way: DHL/Fedex/TNT/UPS/EMS

[Request For Quotation](#)

PRODUCT PARAMETER

Part Number	MAX4731ETA+	Manufacturer	Maxim Integrated
Description	IC SWITCH DUAL SPST 8TDFN	Lead Free Status / RoHS Status	Lead free / RoHS Compliant
Quantity Available	5373 pcs	Data sheet	Part Numbering System MAX31-33
Category	Integrated Circuits (ICs)	Voltage - Supply, Single (V+)	2 V ~ 11 V
Voltage - Supply, Dual (V±)	-	Switch Time (Ton, Toff) (Max)	85ns, 45ns
Switch Circuit	SPST - NO	Supplier Device Package	8-TDFN-EP (3x3)
Series	-	Packaging	Tube
Package / Case	8-WDFN Exposed Pad	Operating Temperature	-40°C ~ 85°C (TA)
On-State Resistance (Max)	25 Ohm	Number of Circuits	2
Multiplexer/Demultiplexer Circuit	1:1	Moisture Sensitivity Level (MSL)	1 (Unlimited)
Lead Free Status / RoHS Status	Lead free / RoHS Compliant	Detailed Description	2 Circuit IC Switch 1:1 25 Ohm 8-TDFN-EP (3x3)
Current - Leakage (IS(off)) (Max)	100pA	Crosstalk	-108dB @ 1MHz
Charge Injection	7.5pC	Channel-to-Channel Matching (ΔRon)	200 mOhm
Channel Capacitance (CS(off), CD(off))	20pF, 20pF	Base Part Number	MAX4731
-3db Bandwidth	300MHz		

Component-World.com is a Reliable Stocking Distributor of Electronic Components. We specialize in all Maxim Integrated series electronic components. We have 5373 pieces of Maxim Integrated MAX4731ETA+ in stock available now. Request a quote from electronics components distributor at Component-World.com, our sales team will contact you within 24 hours.
RFQ Email: info@Components-World.com

RELATED PRODUCTS

	Part#: MAX4733ETA+ Description: IC SWITCH DUAL SPST 8TDFN	Manufacturers: Maxim Integrated	RFQ
	Part#: MAX4732EUA+T Description: IC SWITCH DUAL SPST 8UMAX	Manufacturers: Maxim Integrated	RFQ
	Part#: MAX4733EUA+ Description: IC SWITCH DUAL SPST 8UMAX	Manufacturers: Maxim Integrated	RFQ
	Part#: MAX4732EUA+ Description: IC SWITCH DUAL SPST 8UMAX	Manufacturers: Maxim Integrated	RFQ
	Part#: MAX472ESA Description: IC OPAMP CURRENT SENSE 8SOIC	Manufacturers: Maxim Integrated	RFQ
	Part#: MAX4731EUA+ Description: IC SWITCH DUAL SPST 8UMAX	Manufacturers: Maxim Integrated	RFQ
	Part#: MAX472CPA Description: IC OPAMP CURRENT SENSE 8DIP	Manufacturers: Maxim Integrated	RFQ
	Part#: MAX472CSA Description: IC OPAMP CURRENT SENSE 8SOIC	Manufacturers: Maxim Integrated	RFQ
	Part#: MAX4731EBL+ Description: IC ANALOG SWITCH	Manufacturers: Maxim Integrated	RFQ
	Part#: MAX4731ETA+T Description: IC SWITCH DUAL SPST 8TDFN	Manufacturers: Maxim Integrated	RFQ
	Part#: MAX4731EUA+T Description: IC SWITCH DUAL SPST 8UMAX	Manufacturers: Maxim Integrated	RFQ
	Part#: MAX4733EUA+T Description: IC SWITCH DUAL SPST 8UMAX	Manufacturers: Maxim Integrated	RFQ
	Part#: MAX472EPA Description: IC OPAMP CURRENT SENSE 8DIP	Manufacturers: Maxim Integrated	RFQ
	Part#: MAX472ESA+ Description: IC OPAMP CURRENT SENSE 8SOIC	Manufacturers: Maxim Integrated	RFQ
	Part#: MAX4730EXT+T Description: IC SWITCH SPDT SC70-6	Manufacturers: Maxim Integrated	RFQ
	Part#: MAX4734EGC+ Description: IC MULTIPLEXER 4X1 12QFN	Manufacturers: Maxim Integrated	RFQ
	Part#: MAX4730ELT+T Description: IC SWITCH SPDT 6UDFN	Manufacturers: Maxim Integrated	RFQ
	Part#: MAX472CSA+ Description: IC OPAMP CURRENT SENSE 8SOIC	Manufacturers: Maxim Integrated	RFQ
	Part#: MAX4733ETA+T Description: IC SWITCH DUAL SPST 8TDFN	Manufacturers: Maxim Integrated	RFQ
	Part#: MAX4731EBL+T Description: IC SWITCH DUAL SPST 9UCSP	Manufacturers: Maxim Integrated	RFQ

Related keywords for MAX4731ETA+

Maxim Integrated MAX4731ETA+	MAX4731ETA+ distributor	MAX4731ETA+ supplier	MAX4731ETA+ price
MAX4731ETA+ download datasheet	MAX4731ETA+ datasheet	MAX4731ETA+ stock	buy MAX4731ETA+
Maxim Integrated MAX4731ETA+			